



CERTIFICATE OF ANALYSIS

20 Martin Ross Avenue, North York, ON, M3J 2K8, CANADA
Tel: (416) 665-9696, Fax: (416) 665-4439
Email: orders.trc@lgcgroup.com Website: www.trc-canada.com

1. Identification

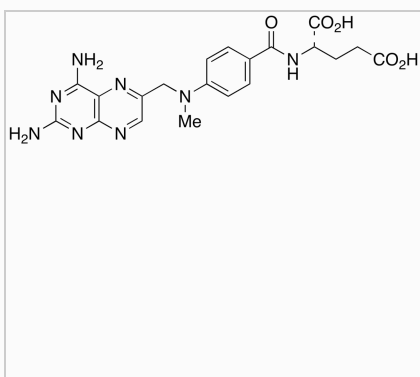
Catalogue Number: KIT0310

CAS Number: 59-05-2

Product: Methotrexate (1.0mg/mL in Methanol with 0.1N NaOH)

Synonym: N-[4-[(2,4-Diamino-6-pteridiny)methyl]methylamino]benzoyl]-L-glutamic Acid; (+)-Amethopterin; 4-Amino-N10-methylpteroylglutamic Acid; 4-Amino-N10-methylfolic Acid; Antifolan; CL 14377; EMT 25299; Emtexate; Ledertrexate; MTX; L-Metatrexan; Methylaminopterin; Mexate; NSC 740; R 9985; Rheumatrex; Trexall;

Structure:



Molecular Formula:

$C_{20}H_{22}N_8O_5$

Molecular weight:

454.44

Source of Product:

N/A

Solubility:

Basic Methanol (Soluble),
Water (Soluble)

Lot Number: 14-CGS-134-1

Purity: 98%

Shipping Condition: This Product Is Stable To Be Shipped At Room Temperature

Storage Condition: -20°C

2. Warning

Warning 1:

Warning 2:

Warning 3:

3. Analytical Information

Tests:	Specifications:	Results:
Appearance	Pale Yellow to Green Solution	Clear Pale Green to Yellow Solution
NMR	Conforms to Structure	Conforms
MS	Conforms to Structure	Conforms

Additional Information:

Preparation: 100.8 mg of M260675, 4-ABY-183-1 to 100 mL Methanol with 0.1N NaOH

Purity is based on the analytical results of the tests performed. NMR and Elemental Analysis (if available) may have an accuracy of $\pm 2\%$. Isotopic purity is based on mass distribution observed. The contents of the specifications are subject to change without advance notice, and the specification values displayed here are the most up to date values.

4. Signatures

Reviewed By	Reviewed By	C of A Approved By	Test Date	Retest Date
Sarbjee Kaur	Toni Rantanen	Chanell Chu	11/7/2023	11/5/2027